



# Explosion-Proof LED Flexible Strip Light

x-Glo Series EXM Range

Certificate No: IECEX TSA 21.0013X

# 1. Functions and Features

## 1.1 Product description

The X-GLO EXM Range is an innovative line of LED hazardous area lighting products, specifically designed for use in potentially explosive atmospheres (Zone 1/21 and 2/22) within harsh industrial settings such as coal mines and oil & gas facilities. Our Explosion Proof Strip Lights are designed to provide a reliable and safe lighting solution that provide continuous area lighting and targeted lighting for equipment areas.

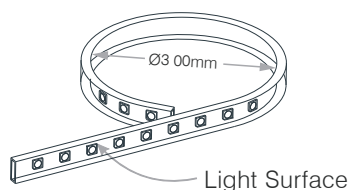
## 1.2 Features

- Explosion-Proof: IECEx approved for Zone 1/21 and 2/22, suitable for methane, coal dust, and various combustible gases.
- Long Life, Low Energy: 50,000+ hours lifespan, low energy consumption, and high efficiency.
- Versatile Lighting: White for continuous lighting, colored versions for safety systems.
- Robust Design: Flexible silica gel material, waterproof connector, and controllers for underground mines.
- High-Quality LED: High-brightness SMD LED chips for superior illumination.
- Voltage Compatibility: Rated input voltage of 48v, 36v, and 24v DC/AC for flexible installation.
- IP67 Rating: Injection-molded silicone for dust and water protection.
- Consistent Performance: High color consistency and uniformity for visually cohesive lighting.

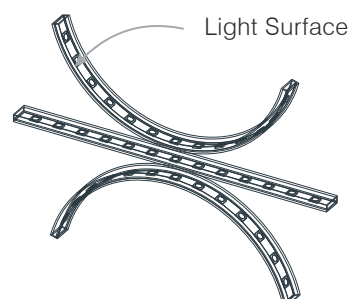
## 1.3 Application

- Wastewater treatment, oil and gas refineries, drilling rigs, petrochemical facilities, food and beverage facilities, tunnels, outdoor or indoor mounted general area lighting, and where flammable vapors, gases, ignitable dusts, fibers or filings are present.
- Applies to hazardous locations of Zone 1/21 and 2/22 with explosive gas atmosphere.

## 1.4 Minimum Bend Diameter



The light can only be bent along the light surface.



Do not bend smaller than allowed minimum bend diameter.

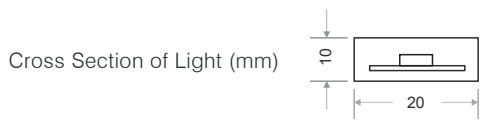
## 2. Technical Data of Strip Light

### 2.1 Parameters

EX marking	IECEX TSA 21.0013X
Operating temperature range	-40°C~80°C
Dimension	W20mm*H10mm
IP degree of protection	IP67
Impact strength	IK10
Standards	EN IEC 60079-0 EN IEC 60079-18 EN IEC 60079-28
Weight	285g/m

Voltage DC	Lumen/m	Rated per/m	Min Length	Max. Running Length @Mb	Rated Current (A/m)	PF
48	1000	12W	50cm	20m	0.25	1
48	660	8W	50cm	25m	0.17	1
48	330	4W	50cm	30m	0.08	1
36	1000	12W	50cm	20m	0.33	1
36	750	9W	50cm	25m	0.25	1
36	500	6W	50cm	30m	0.17	1
36	250	3W	50cm	30m	0.08	1
24	1000	12W	50cm	20m	0.5	1
24	830	10W	50cm	20m	0.42	1
24	660	8W	50cm	25m	0.33	1
24	500	6W	50cm	30m	0.25	1

## 2.2 Dimension

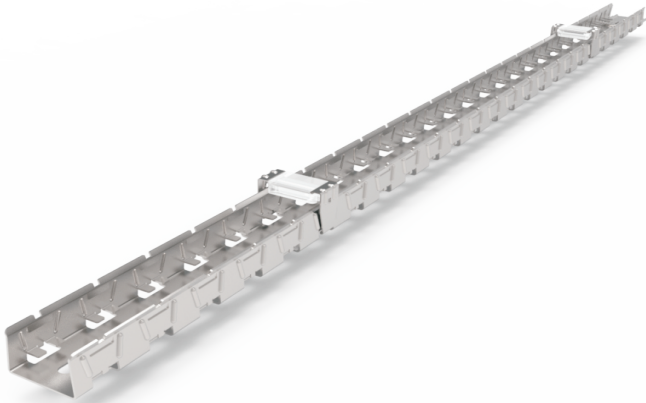


Item	Figure	Description
Injection-moulded Front Connector(top end)	<p>Technical drawing of the injection-moulded front connector. It shows a side view with a cable on the left and a cylindrical body with diameters of <math>\varnothing 9.5</math> and <math>\varnothing 12.5</math>. A top view shows a square shape with a width of 20 mm and a height of 12.5 mm.</p>	Connect light to power supply with pre-installed front feed cable, IP65/IP67.
Injection-moulded End Cap	<p>Technical drawing of the injection-moulded end cap. It shows a side view with a width of 20 mm and a height of 12.5 mm. A top view shows a rectangular shape with a width of 20 mm and a length of 20 mm.</p>	Cross Section of Light (mm)

Note: Unless otherwise stated, the tolerance of the connector is  $\pm 0.5$ mm.

### 3. Mounting Profiles

#### 3.1 Stainless Steel Profile

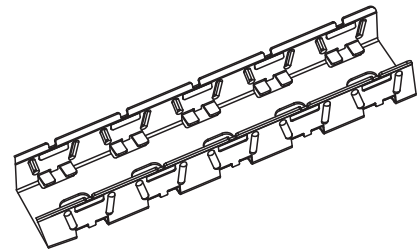
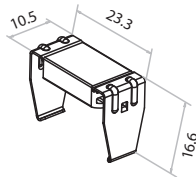
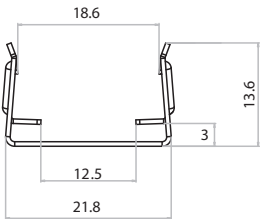


It's engineered for the safe and quick installation of F2010 Explosion Proof LED Strip. The design is smart enough to fix LED strip tightly, preventing it from falling off the mounting profile when vibration occurs.

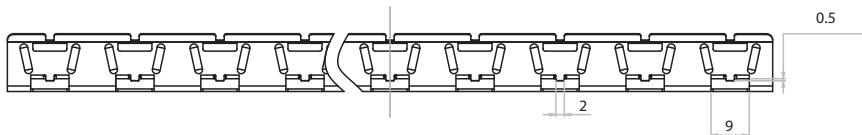
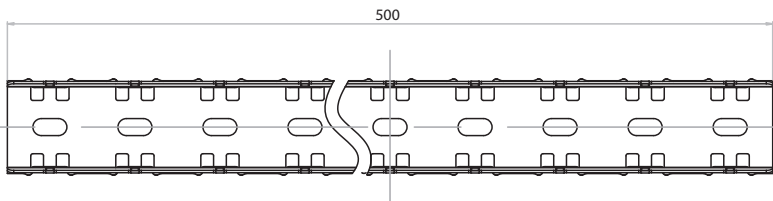
Accessories are available on demand for either screw mounting or strap mounting based on the site condition. The main structure, made of 316L stainless steel, makes it resistant to corrosion, suitable for environments where hazardous gas or dust exists and industrial workplaces.

Test Object	No.	Experiment Item	Standard
Metal Parts	1	Weather Resistance-Salt Spray	IEC 68-2-11
Mounting profile	2	Clamping force	

Dimension: mm



Tolerance: ±0.2mm



Standard Length	Slotted Hole
500mm/19.68in	4*10mm/0.16*0.39in

### 3.2 Suspension Kit



It's a simple but useful device for facilitating the suspension installation, portable and reusable, and the design of no screws enables the ease of assembly and disassembly on site.

The hanging won't be subject to the shape, the size of the support, and its height is adjustable. Smartly locked with the hook, the wire rope is hard to fall off.

In addition, it is rust-resistant, adopted 316 stainless steel, which makes it perfect for wet and vibration environments, such as mining tunnels, bridges, etc.

Test Object	No.	Experiment Item	Standard
Metal Parts	1	Weather Resistance-Salt Spray	IEC 68-2-11
Mounting profile	2	Clamping force	

Dimension: mm

