

Mineglow lights the way to emergency escapeways



REGION

Ghana,
West Africa



COMMODITY

Gold



MINE TYPE

Underground



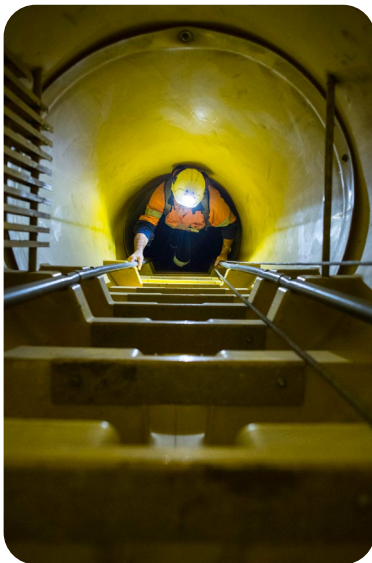
SOLUTIONS

Emergency Lighting
Control Unit and
14-24V Green Chasing
LED strips



METRES SUPPLIED

1390m



Challenge

In underground environments, mine operators need to ensure that everything to support an escape is in place, available and easy for staff to locate.

As escapeways are located at different locations throughout the underground gold mine, the site required a robust lighting solution that would improve visibility and direct workers to the nearest escapeway in case of an evacuation.

All 12 modular escapeways are fully enclosed and required lighting inside the polyurethane ladder tubes.

Directional lighting was also critical to help staff locate their nearest escape way when visibility is compromised.

Solution

Mineglow worked with the mine to deliver x-Glo's 14-24V Green Chasing (GC) Emergency Lighting and 60-36V white (6500K) LED strips.

In the event of an emergency evacuation, the green directional lighting, programmed by the Emergency Lighting Control Unit clearly directs underground workers to each escape tunnel by pulsing in the direction they need to travel.

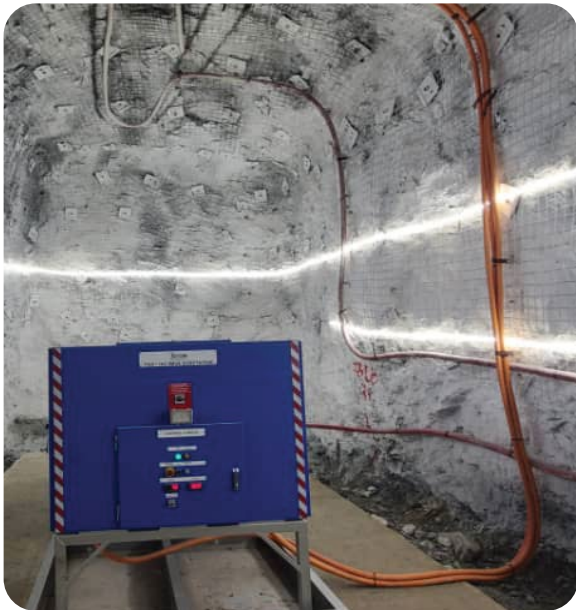
At the same time, the white LED strips provide a complete floor to ceiling flood of light to illuminate key areas and create a safe, professional

Emergency Lighting Control Unit



Mineglow's Controller is tailor made for harsh mining environments. It has a dual purpose in choosing which colour to chase, and in which direction. The controller can be operated manually or incorporated into the underground network.

>> [LEARN MORE](#)



Contact us today

Carinne Pater
sales@mineglow.com.au

Sydney
+61 2 8518 1294

Brisbane
+61 7 3171 3510



Results

- ✓ Higher standard of illumination
- ✓ Escapeways highly visible in emergency conditions
- ✓ Improve miner safety in emergencies
- ✓ Support miner self escape
- ✓ Minerals commission regulatory standard met
- ✓ Greater accident and emergency response preparedness

Outcome

Given the success of the installation and the improved illumination in key areas, the mine's Mineral Commission has improved their safety standard to reflect the quality and lighting output of Mineglow's lighting solutions. The x-Glo LED strip lighting is now standard across the mine and on all contractor diamond drill rigs.

“The Mineglow product ticked all these boxes and has proven to be a good investment and improvement to the standards we strive for.

By introducing Mineglow's white LED strips in our substations, pump station and underground workshops, we have created a well illuminated, professional environment of the highest standard.”

- **Electrical Superintendent,
Underground Gold Mine**